

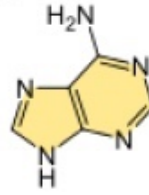
DNA

- genetische Information
- Basensequenz codiert Erbinformation

Bau der DNA:

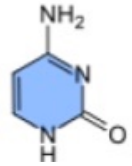
Basen:

Adenin



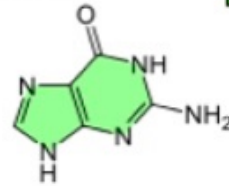
A

Cytosin



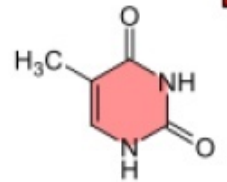
C

Guanin



G

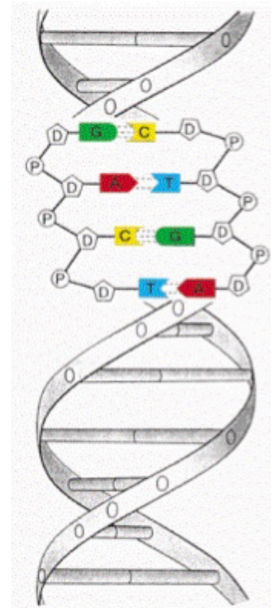
Thymin



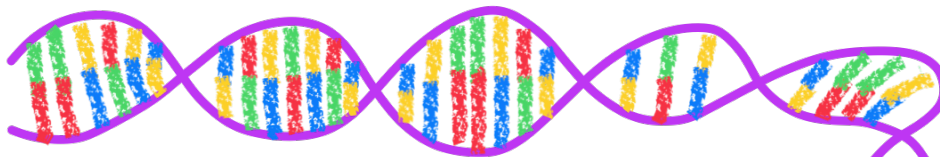
T

Nucleotid:

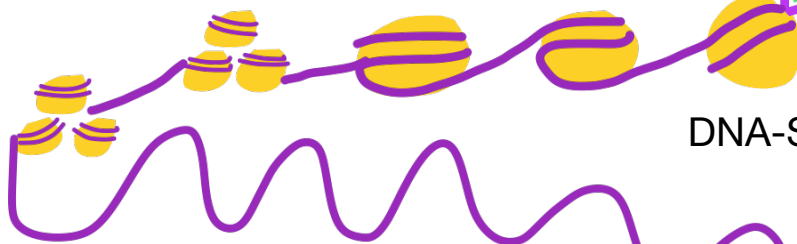
1 Base,
Phosphorsäure=P,
Monosachharid=D



Verpackung der DNA:



Doppelhelixstruktur



DNA-Stränge in Histone verpackt

Schleifenbildung



Spiralisierung

Chromosom =
aus 2 Chromatiden